



## Product Catalog

SURGEONS | DENTISTS | HYGIENISTS



# INTRODUCTION



## At Orasoptic, we know eyes.

Masters of our craft, we unlock your most important clinical instrument and in turn, empower you to perform at your best.

Because an assembly-line approach to vision just doesn't cut it, we custom design and craft our products to be an extension of you.

Together we can enable you to see the unseen.

To practice more ergonomically. To excel at your craft.

As an industry leader, Orasoptic is constantly pushing the limits to provide clinicians with the latest products that achieve superior visualization through enhanced ergonomics, improved magnification and illumination.



### WATCH NOW!

Learn more about  
custom manufacturing

## WHAT'S INSIDE:

- 4** INNOVATION
- 6** TESTIMONIALS
- 8** LAB TEST RESULTS
- 10** GALILEAN LOUPES
- 11** EXPANDED FIELD PRISMATIC LOUPES
- 12** VARIABLE MAGNIFICATION LOUPES
- 14** OMNIOPTIC™ INTERCHANGEABLE LOUPES
- 15** ERGO/DEFLECTION LOUPES
- 16** RDH ELITE™ LOUPES
- 18** FRAMES
- 22** ILLUMINATION/TRUCOLOR™
- 24** DRAGONFLY™ POWERED LOUPE
- 26** HEADLIGHTS
- 29** LASER INSERTS
- 30** SAFETY/FACE SHIELDS

# A PASSION FOR INNOVATION

**Innovation is our way of life. We remain steadfastly committed** to investing in innovation to advance the leading edge of design in the field of dental & surgical loupes and headlights. We are proud to have

presented the industry with many 'first and only's'. Here's a look at some of the innovations, many of which are available **exclusively through Orasoptic**.

## VARIABLE MAGNIFICATION

With the EyeZoom™ capability, the first **variable magnification loupes** are available.

## XV1™

**The complete package** — the first and only integrated loupe and headlight in one.

## EXPANDED FIELD PRISMS

Enables precise interactions and enhanced visibility for various exacting procedures **3.5x to 5.5x**.

## OMNIOPTIC™

The first and only **interchangeable magnification loupe**.



# INNOVATION is a core value at Orasoptic.

## PATENTED HEADLIGHTS

**U.S. patents granted** for the optical design in each of our headlamps, enabling uniform light distribution.

## TRUCOLOR™

High-color rendering index (CRI) illumination across our range of LED headlamps.

## TEMPO™ REFINED FIT

Designed to provide optimal comfort for anyone with a lower nose bridge and prominent cheekbones.

## DRAGONFLY™

A triumph in optical engineering, this powered loupe seamlessly combines magnification and a built-in headlight into a single, lightweight product.



# HEAR FROM YOUR PEERS

**Practice more ergonomically. The use of magnification systems** has been associated with decreased neck and lower back discomfort, as they allow clinicians to maintain a healthier posture. Elongated bezels provide steeper declination angles allowing for a reduction in physical strain. Sitting in a more ergonomically correct position throughout the workday can promote a long and healthy career.



“For 7 out of 9 years of being a practicing dentist I have used my Orascoptic loupes and light! Awesome clarity and supports ergonomic neck and back posture. **I have not once had any neck or back pain since using these loupes!**”

— Dr. Monica S. Wheeler, DDS



“My Orascoptic loupes have drastically **improved my ability to see detail at a distance** so I can continue to provide exceptional care for my patients.”

— Dr. Melanie Silvestrini



“I’ve been using my Orascoptic loupes and light since residency. They help maintain proper posture and **save my neck and back after hours of surgery.**”

— Viraj J. Mehta, MD, MBA

*All clinicians quoted are unpaid Orascoptic product users speaking of their personal experience.*





“When you make your investment in loupes, **do it right the first time by choosing Orasoptic.** You'll view details at a higher level of accuracy and precision while keeping your spine straight at the same time.”

— Dr. Varun Chintakunta, DMD

“**My Orasoptic loupes are the saviors of my back.**

The magnification and illumination allow me to practice accurate ergonomics while practicing dentistry.”

— Erin Howard, Dental Student



All clinicians quoted are unpaid Orasoptic product users speaking of their personal experience.



# LAB-TESTED RESOLUTION + BRIGHTNESS = CLARITY

**The difference is striking.** In a series of third-party lab tests, Orascoptic's 2.5x loupes consistently outperformed the competition with superior combined scores for field width, field depth, resolution and light transmission. Most notably, our scores were outstanding in the areas that contribute most to image clarity.

**Third-party testing confirms** that with best in class optical resolution and best in class light transmission, Orascoptic loupes deliver the clearest image quality in the industry.

## ▶ THE LIGHT TRANSMISSION TEST

This test measured how much light passes through the optic to the eye. The greater the light transmission, the brighter the image which enhances clarity.

For the light transmission test, Orascoptic's loupes measured:

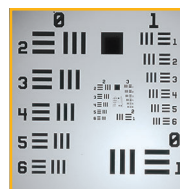
- **40% better** than Manufacturer A
- **14% better** than Manufacturer B
- **20% better** than Manufacturer C

To learn more about the tests, visit [Orascoptic.com](http://Orascoptic.com).

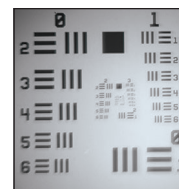
▶ **THE RESOLUTION TEST** Scores were determined by viewing the industry-standard USAF resolution target (below) through each telescope and performing the relevant calculations.

For the resolution test, Orascoptic's loupes measured:

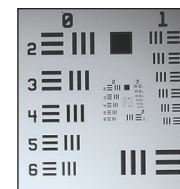
- 125%** better than A
- 12%** better than B
- 26%** better than C



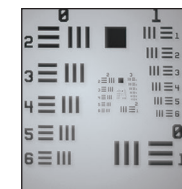
**ORASCOPTIC**  
(22.63 LP/mm)



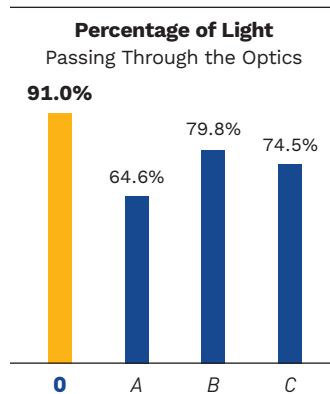
**Manufacturer A**  
(10.03 LP/mm)



**Manufacturer B**  
(20.16 LP/mm)



**Manufacturer C**  
(17.96 LP/mm)



## Did You Know?

**As our eyes age, less light reaches our retinas.** Our loupes have a greater light transmission which allows you to maintain a high level of clarity and detail as you progress in your career.







**As an industry leader, Orascope is constantly pushing the limits** to provide the latest products that achieve superior visualization through enhanced ergonomics, improved magnification and illumination for any profession where precision is a necessity.

**ORASCOPTIC**

Jessica Parks, RDH, shares her experience working with Orascope



**EYE ZOOM**

Jim Tauschek, DDS, shares his experience with Orascope's EyeZoom



# GALILEAN LOUPES

**High Definition Loupes (HDL™)** provide a generous field size with edge-to-edge clarity. Our lightweight Galilean telescopes are designed to deliver comfort rarely associated with optics of equivalent magnification power.

In a series of third-party lab tests, the **HDL™ 2.5 Macro** consistently outperformed the competition in resolution, light transmission, field width, and field depth.

The **HDL™ 2.5 Micro** is distinguished by its exceptionally small profile. This is the telescope of choice for clinicians who are overly sensitive to weight.

If you are looking for a little extra magnification in a compact design, the **HDL™ 3.0** affords a bit more power, while maintaining a large field-of-view.

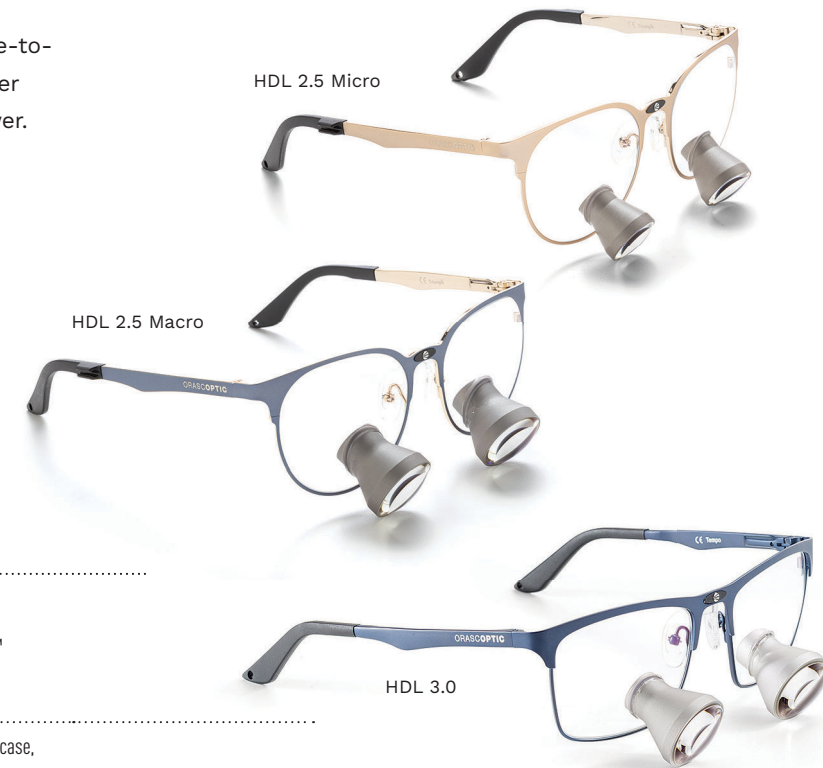
## FRAME OPTIONS

Dragonfly™ · Phantom™ · Rydon™ · Tempo™ · Tempo™ Refined Fit · Triumph™ · Victory™

## SPECIFICATIONS

Each loupe package includes side shields, head strap, personalized storage case, prescription lens, optical screw driver, cleaning cloth and anti-fog cloth.

Power	Working Distance	Field Width	Field Depth	Weight*
2.5x (Micro)	Customized to each user	3.4" (8.75 cm)	7.0" (17.80 cm)	1.38 oz (39.15 g)
2.5x (Macro)	Customized to each user	4.0" (10.40 cm)	5.0" (12.70 cm)	1.80 oz (50.70 g)
3.0x	Customized to each user	3.1" (7.90 cm)	7.5" (19.0 cm)	1.70 oz (48.70 g)



\*measured on Orasoptic Victory Frame, see pg 20



# PRISMATIC LOUPES

## HDL™ PRISMS

**Prismatic Expanded Field Loupes** — Ranging from 3.5x to 5.5x, these loupes are designed for healthcare professionals who perform exacting procedures. The HDL prisms enable precise interactions, enhanced visibility and provide a customizable declination angle that accommodates various surgical procedures. The compact design and brushed metallic finish of the telescope offers an aesthetically pleasing element to this medical device.

### FRAME OPTIONS

Dragonfly™ · Phantom™  
Rydon™ · Tempo™  
Tempo™ Refined Fit  
Triumph™ · Victory™



**SPECIFICATIONS** Each loupe package includes side shields, head strap, personalized storage case, prescription lens, optical screw driver, cleaning cloth and anti-fog cloth.

Power	Working Distance	Field Width	Field Depth	Weight*
3.5x	Customized to each user	3.5" (8.90 cm)	3.6" (9.10 cm)	2.4 oz (67.5 g)
4.5x	Customized to each user	2.95" (7.50 cm)	2.64" (6.70 cm)	2.5 oz (71.5 g)
5.5x	Customized to each user	2.51" (6.40 cm)	2.32" (5.90 cm)	2.6 oz (74.4 g)

\* measured on Orascoptic Victory Frame, see pg 20



# VARIABLE MAGNIFICATION LOUPES

## Your day is variable. Your loupe should be too.

Until the introduction of Orasoptic's EyeZoom in 2015 — the first variable magnification loupe — all loupes employed only a single magnification power along with a static field-of-view.

These limitations confined the clinician to just one visual perspective of the operating site. The unique versatility of variable magnification telescopes empowers the clinician to choose different levels of precision and field size based on the type of procedure they are performing.

No longer do you have to own multiple pairs of loupes to experience different magnification powers. With EyeZoom loupes, you can zoom in to higher magnification for more exacting procedures, and zoom out when a larger field size is desired.

## Fixed magnification is a thing of the past.

### FRAME OPTIONS

Dragonfly™ · Phantom™  
Rydon™ · Tempo™  
Tempo™ Refined Fit  
Triumph™ · Victory™

Three different telescopes affording unprecedented magnification options for healthcare professionals.

### EYEZOOM™ MINI

2.5x + 3.5x



### EYEZOOM™

3.0x + 4.0x + 5.0x

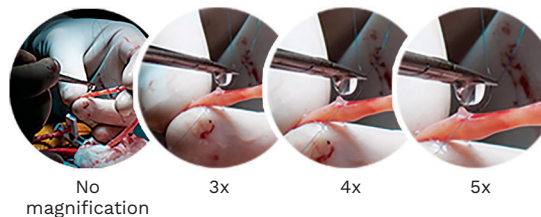


### EYEZOOM™ MAX

3.5x + 6.5x



### The EyeZoom's 3-Step Variable Magnification:



# VARIABLE MAGNIFICATION LOUPES

EYE ZOOM<sup>™</sup>  
MINI



## EYEZOOM MINI

Power	Field Width	Field Depth
2.5x	4.0" (10.1 cm)	4.8" (12.1 cm)
3.5x	3.2" (8.1 cm)	3.8" (9.6 cm)

Working Distance customized to each user.  
Weight on Orascope Tempo frame: 2.6 oz. (73.7 g)

EYE ZOOM<sup>™</sup>



## EYEZOOM

Power	Field Width	Field Depth
3.0x	3.7" (9.5 cm)	4.7" (11.9 cm)
4.0x	2.9" (7.4 cm)	3.8" (9.7 cm)
5.0x	2.4" (6.1 cm)	3.0" (7.6 cm)

Working Distance customized to each user.  
Weight on Orascope Tempo frame: 3.0 oz. (86.2 g)

EYE ZOOM<sup>™</sup>  
MAX



## EYEZOOM MAX

Power	Field Width	Field Depth
3.5x	3.5" (8.8 cm)	3.5" (8.8 cm)
6.5x	2.2" (5.6 cm)	2.0" (5.0 cm)

Working Distance customized to each user.  
Weight on Orascope Tempo frame: 3.27 oz. (92.7 g)



# INTERCHANGEABLE LOUPES



## OMNIOPTIC™

### Discover the first and only interchangeable magnification loupe

that allows clinicians to select the optimal magnification power for each procedure. Accommodating four magnification powers ranging from 2.5x – 5.5x, the OmniOptic is an ideal system for users looking to increase their magnification power over the course of their career.



### LOUPE OPTIONS

- HDL™ 2.5 Macro
- HDL 3.5
- HDL 4.5
- HDL 5.5

### FRAME OPTIONS

- Phantom™ · Rydon™
- Tempo™ · Tempo™ Refined Fit
- Triumph™ · Victory™

### SPECIFICATIONS

Each loupe package includes side shields, head strap, personalized storage case, prescription lens, optical screw driver, cleaning cloth and anti-fog cloth.

Power	Working Distance	Weight*
2.5x	Customized to each user	2.02 oz (57.3 g)
3.5x	Customized to each user	2.66 oz (75.3 g)
4.5x	Customized to each user	2.79 oz (79.1 g)
5.5x	Customized to each user	2.90 oz (82.1 g)

\* measured on Orasoptic Victory Frame, see pg 20



# ERGO LOUPES

## HDL ERGO™

The HDL Ergo loupe employs **refractive prisms** that enable you to sit up straight and reduce neck tilt. Work in all-day comfort and preserve your career with this ergonomic optical design.

### FRAME OPTIONS

Dragonfly™ · Phantom™  
Rydon™ · Tempo™  
Tempo™ Refined Fit  
Triumph™ · Victory™



### SPECIFICATIONS

Each loupe package includes side shields, head strap, personalized storage case, prescription lens, optical screw driver, cleaning cloth and anti-fog cloth.

Power	Working Distance	Field Width	Field Depth	Weight*
3.5x	Customized to each user	3.3" (8.5 cm)	3.1" (8.0 cm)	2.38 oz (67.6 g)
5.0x	Customized to each user	2.56" (6.5 cm)	2.56" (6.5 cm)	2.37 oz (67.2 g)

\*measured on Orascope™ Triumph frame



# HYGIENE LOUPES

## RDH 2.5 ELITE

An **optimal field of view** that encompasses a field width and depth that is recommended for dental hygiene professionals. The steep telescope declination of RDH Elite helps encourage proper posture.

### FRAME OPTIONS

Dragonfly™ RDH • RDH Elevate™ • Phantom™



### SPECIFICATIONS

Each loupe package includes side shields, head strap, personalized storage case, prescription lens, optical screw driver, cleaning cloth and anti-fog cloth.

Power	Working Distance	Field Width	Field Depth	Weight*
2.5x	Customized to each user	4.0" (10.20 cm)	6.0" (15.20 cm)	1.7 oz (48.2 g)

\* measured on Orasoptic Phantom frame





# HYGIENE LOUPES

## RDH ERGO™ 3.0

**Focused on ergonomics**, this deflection loupe was designed exclusively for hygienists.

By using refractive prisms that allow you to sit up straight and reduce neck tilt, the RDH Ergo loupe delivers all-day comfort and can preserve your career.



### FRAME OPTIONS

Dragonfly™ RDH • RDH Elevate™ • Phantom™

### SPECIFICATIONS

Each loupe package includes side shields, head strap, personalized storage case, prescription lens, optical screw driver, cleaning cloth and anti-fog cloth.

Power	Working Distance	Field Width	Field Depth	Weight*
3.0x	Customized to each user	3.7" (9.5 cm)	3.5" (9.0 cm)	2.45 oz (69.4 g)

\*measured on an Orascope Medium Tempo frame



# ABOUT OUR FRAMES

We take pride in the fact that our frames are designed, first and foremost, to be functional platforms for medical devices. Rather than simply purchasing off-the-shelf frame models, we take into consideration the unique requirement to support the weight and accurate convergence of short-range telescopes.

Inherent in our frame designs are unique features that enhance comfort, performance, durability, and safety. And yes, we have fun with fashion, too. Whether you prefer sports frames or iconic frames, round shapes or square, bold colors or classic tints, we are confident we have a frame to match your personal style.



# FRAMES SPORT

## PHANTOM™



**MATERIAL** Titanium

**SIZES** Small · Regular



Black



Slate



Sapphire



Iris



Rose Gold

*Wide range of prescriptions, including bifocals*



## RYDON™



**MATERIAL** Advance Carbon,  
Magnesium,  
Silicium, Grilamid,  
and Titanium

**SIZES** One Size



Black



Blue



Carbon



Merlot



Tortoise



# FRAMES **ICONIC**

## TRIUMPH™



Built-in channel  
for your light cable.

The Triumph frame features a built-in cable control feature and is available in five stunning two-tone colors.

**MATERIAL** Titanium

**SIZES** Small • Medium • Large



Black



Gold



Rose Gold



Sapphire



Slate

## VICTORY™



The small, yet sophisticated, Victory frame was inspired by European fashion.

**MATERIAL** Titanium

**SIZES** Small • Medium • Large



Black



Blue



Merlot



Slate

Unlimited prescriptions.



# FRAMES ICONIC

## TEMPO™



The Tempo frame brings a sleek and minimalist design for today's trendy clinician.

**MATERIAL** Titanium

**SIZES** Small • Medium • Large



Black



Blue



Merlot



Slate



Amethyst

## TEMPO™ REFINED FIT



The Refined Fit version of our popular Tempo frame is engineered to provide optimal comfort for clinicians with prominent cheekbones and a lower nose bridge.

**MATERIAL** Titanium

**SIZES** Small • Medium • Large



Black



Blue



Merlot



Slate



Amethyst

*Unlimited prescriptions.*



# ABOUT ILLUMINATION

**Orasoptic loupe-mounted LED headlights** allow for proper illumination. Here's what you should consider:

▶ **THE COLOR RENDERING INDEX (CRI)** is an industry standard measurement of color accuracy in lights. Our TruColor headlights have a CRI of 90+ compared to our competitors' ~ 70. TruColor technology fulfills our core mission: set the standard for driving innovation.

▶ **SPOT UNIFORMITY:** A uniform round spot means that the brightness and color of the light are consistent from edge to edge, as opposed to dimming on one side or a blurred edge. Using a light with a uniform spot helps to prevent eye strain or fatigue.

**Orasoptic was granted a U.S. patent for the optical design used in each of its headlights.** With Orasoptic-exclusive technology, clinicians can flood oral and surgical sites with a more uniform distribution of light, using an optical design that is lighter weight than before — that's a win-win!

**PATENT  
APPROVED**

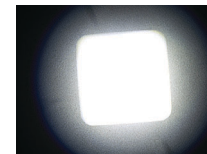
▶ **BRIGHTNESS:** Don't let it get twisted — comparing lumens to footcandles is like comparing apples to oranges. Information based on such a comparison wouldn't be accurate. Orasoptic headlights range from 32 lumens (Spark) to 85 lumens (Endeavour XL). We are happy to help you determine which level of intensity best suits your day-to-day.

▶ **SAFETY:** Each Orasoptic headlight model is tested to ensure compliance with blue light testing standards set by the International Electrotechnical Commission. To learn more, visit [Orasoptic.com/products/headlights](http://Orasoptic.com/products/headlights).

▶ **SPOT QUALITY:** Spot size and color are important factors to consider when determining the quality of a light. We partnered with an independent research firm to conduct a comparative study on the quality of Orasoptic light versus four main competitors:



**ORASOPTIC**



*Manufacturer A*



*Manufacturer B*



*Manufacturer C*



*Manufacturer D*

*Based on results of independent third-party testing.*



# TRUCOLOR™ BREAKTHROUGH LOUPE ILLUMINATION TECHNOLOGY



## TruColor™ is Orasoptic's breakthrough technology.

This high-color rendering index (CRI) light enables each Orasoptic headlight system to render colors as close as possible to natural sunlight, providing a higher level of color accuracy.

**TruColor represents a fundamental leap forward** in loupe illumination technology. With a CRI of 90+, TruColor delivers the most precise color without sacrificing the high-quality light output, spot uniformity or battery life you expect from Orasoptic headlights.

## TRUCOLOR™

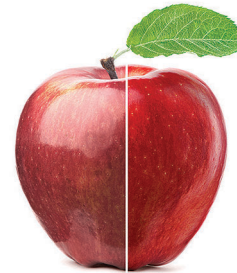


### The TruColor™ ADVANTAGE

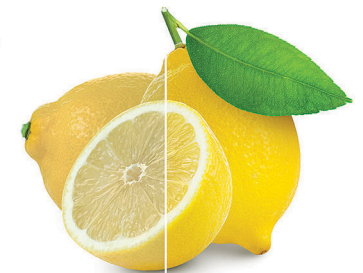
- Breakthrough color rendering
- More natural, accurate reds, yellow and whites
- Identify tissue colors, match shades
- CRI of 90+

### Available on all headlights

- Dragonfly™
- Spark™
- Endeavour™
- Endeavour™ XL
- Endeavour™ MD



70 CRI 90 CRI



70 CRI 90 CRI

# HEADLIGHTS POWERED LOUPE

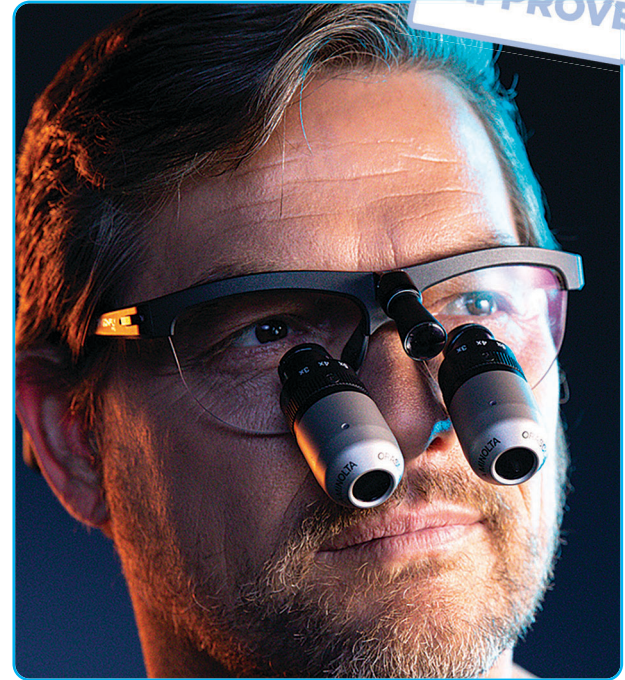
The era of the **powered loupe** has arrived. Dragonfly™ is a loupe with fully integrated battery power and circuitry to operate a built-in headlight.

A triumph of optical engineering, Dragonfly seamlessly combines Orascopic's industry-leading optics and award-winning TruColor™ headlight into a single, lightweight product. All electronics and batteries are completely contained within the custom-built frame itself, so there are no visible wires or cables.

An innovative counter-balance design affords all-day comfort by reducing the weight on the user's nose bridge by as much as 30% compared to a traditional loupe.



PATENT  
APPROVED



PERFORMANCE  
UNBOUND





# HEADLIGHTS POWERED LOUPE



**Our premium PRO model** supports the full line of Orascoptic telescopes and is loaded with bonus features including extra batteries, multiple light intensity settings, and extremely durable ceramic paint finish.

**MAGNIFICATION** 2.5x, 3.0x, 3.5x, 4.5x, 5.5x, 6.5x

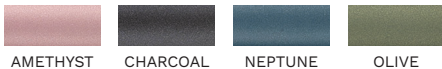
**LIGHT INTENSITY**

High: 78 Lumens; Low: 49 Lumens

**BATTERY RUN-TIME**

High: 3 hrs. 45 min.; Low: 6 hrs.

**BATTERIES INCLUDED:** 6



**Our RDH model** features the Orascoptic line of RDH telescopes, which were designed exclusively for dental hygienists.

**MAGNIFICATION** 2.5x, 3.0x

**LIGHT INTENSITY** 78 Lumens

**BATTERY RUN TIME** 3 hrs. 45 min.

**BATTERIES INCLUDED:** 4



**Our entry-level NEO model** is available in a single color and supports four popular magnification powers. This is the preferred loupe for dental students and medical residents.

**MAGNIFICATION** 2.5x, 3.0x, 3.5x

**LIGHT INTENSITY** 78 Lumens

**BATTERY RUN TIME** 3 hrs. 45 min.

**BATTERIES INCLUDED:** 4

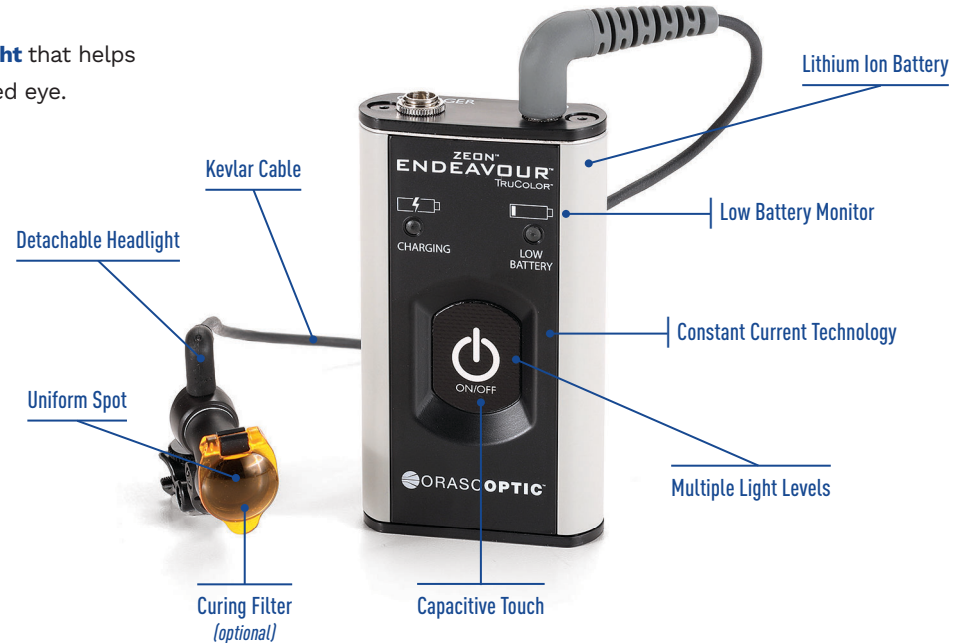


# HEADLIGHTS CORDED

## ENDEAVOUR™ and ENDEAVOUR™ XL

This patented headlight technology provides a precise beam of light that helps illuminate critical details that can often be overlooked by the naked eye.

- **Color Rendering** — TruColor™ technology delivers exceptionally high color rendering accuracy.
- **Uniform Spot** — The homogeneous round spot distributes light evenly across the field of view.
- **Constant Current Technology** — Brightness will not diminish during the run-time of the battery pack.
- **Advanced Capacitive Touch Controls** — Quickly adjust light settings without having to reach into a coat or pants pocket.
- **Multiple Light Levels** — Delivers 3 light intensity levels up to 68 lumens on the Endeavour and 85 lumens on the Endeavour XL.
- **Extended Run Time** — Up to 18 hours with the Endeavour and 24 hours with the Endeavour XL.



## SPECIFICATIONS

Series	Light Intensity	Headlight Weight	Battery Type	Battery Life	Charging Time
Endeavour	32/53/68 Lumens	0.38 oz (10.8 g)	Lithium-ion	Up to 18 hours	Up to 4 hours*
Endeavour XL	53/68/85 Lumens	0.38 oz (10.8 g)	Lithium-ion	Up to 24 hours	Up to 6 hours*

\* Can be used while charging



# HEADLIGHTS **CORDED**

## ENDEAVOUR™ MD

**This portable LED light system is exclusive to the surgical field.**

With the same brightness and run time as the Endeavour XL, the Endeavour MD is tailored to surgeons with an easy-use switch to adjust light settings without reaching into ones pocket.

Endeavour MD is available with two battery packs to ensure a smooth experience for each user.



**ENDEAVOUR™ MD**

Available with  
**TRUCOLOR™**

## SPECIFICATIONS

Each Endeavour MD package includes power supply, charger, option for 2 rechargeable batteries, carrying case, optical screwdriver, and cleaning cloth.

Series	Light Intensity	Headlight Weight	Battery Type	Battery Life	Charging Time
Endeavour MD	53/68/85 Lumens	0.28 oz (8 g)	Lithium-ion	Up to 24 hours	Up to 6 hours*

*\* Can be used while charging*



# HEADLIGHTS CORDLESS

## SPARK™

The self-contained cordless headlight that integrates with virtually any loupe or eyewear frame style. Featuring an innovative, patent-pending design, the Spark dispenses weight evenly across the bridge of a frame giving you a more comfortable fit with minimal concentrated facial pressure.

- **Color Rendering** — TruColor™ technology delivers exceptionally high color rendering accuracy.
- **Uniform Spot** — A precise focused light provides enhanced visibility during procedures.
- **Versatile Power Charger** — A micro USB charger offers added convenience for charging on the go.
- **Blue Light Compliant** — Maintains compliance with blue light testing standards for safety set by the International Electrotechnical Commission (IEC).
- **Advanced Capacitive Touch Controls** — Power light on and off with ease in between procedures and patient consultations.



**SPECIFICATIONS** Each Spark package includes power supply, charger, 2 rechargeable batteries, carrying case, optical screwdriver, cleaning cloth and curing filter.

Series	Light Intensity	Weight	Battery Type	Battery Life (2)	Charging Time
Spark	32 Lumens	1.12 oz (31.8 g)	Lithium-ion	6 hours	3 hours



# LASER PROTECTION

AVAILABLE IN NORTH AMERICA ONLY

## EASE-IN-SHIELDS™

The ideal way to protect your eyesight during hard and soft tissue laser procedures and procedures performed with a curing light. A unique, lightweight design allows the user to easily slide the shield insert in and out of the frame between procedures.

These shields are compatible with most loupe and eyewear models, so the user is able to use the magnification they are accustomed to without having to purchase additional products or go through a frustrating installation process.



### MOUNTING OPTIONS

Insert



### LOUPE OPTIONS

All available Orascoptic loupes

### FRAME OPTIONS

Compatible with all Orascoptic frames models



Also compatible with most other loupe brands & eyewear models

### Hard Tissue Filter (Gray)

Wavelengths

1800 – 1979 nm  
1980 – 2550 nm  
2251 – 3000 nm  
10600 nm

### Soft Tissue Filter (Green)

Wavelengths

800 – 809 nm  
810 – 899 nm  
900 – 979 nm  
980 – 1064 nm  
1065 – 1080 nm

### Curing Filter (Yellow)

Wavelengths

430 – 480 nm

### CO2-Solea Filter (Gray-Blue)

Wavelengths

9000 – 11000 nm



# SAFETY

AVAILABLE IN NORTH AMERICA ONLY

## SAFETY GLASSES

**Eye protection is an essential component** during any procedure and Orascoptic recognizes the importance of providing a solution that goes beyond the standard expectations.

Orascoptic's safety glasses are designed to provide optimal protection from debris, support for prescription and non-prescriptions lens, as well as headlight compatibility for improved viewing.



BLACK



## FACE SHIELDS

**Shields create an additional barrier from contaminated splatter.**

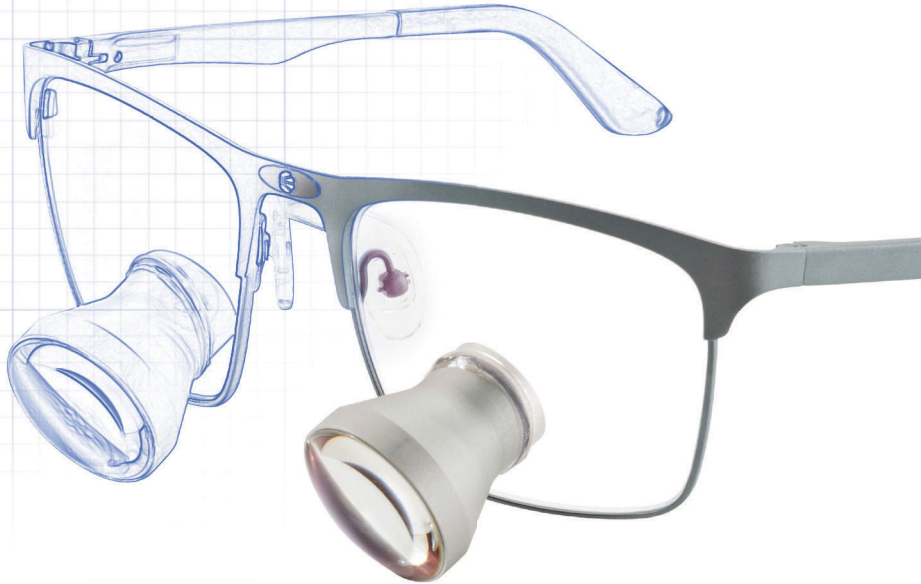
Our quality shields are lightweight, fit comfortably on the user's head and do not create visual distortion or glare.

It is important to consider a shield that is designed with the use of your headlight system in mind.



# BUILD THE PERFECT LOUPE

[Orasoptic.com/loupe-builder](https://www.orasoptic.com/loupe-builder)



**Building your dream loupe is as easy as a few clicks.**

Just let us know what loupe model you're interested in, and what frame style and color you want to mount it on, and you're on your way!

Our easy web interface will walk you right through every step in a matter of minutes.



 **ORASCOPTIC™** | SUPERIOR VISUALIZATION | [Orascoptic.com](https://www.orascoptic.com)

**North America:** 6650 Ronald Reagan Avenue | Madison, WI 53704 | 800-369-3698 | [CustomerCare@orascoptic.com](mailto:CustomerCare@orascoptic.com)

**United Kingdom:** +44 1733 315203 | [CustomerCareUK@orascoptic.com](mailto:CustomerCareUK@orascoptic.com)

**Nordics:** +46 (0) 2 008 83009 | [CustomerCare.Europe@orascoptic.com](mailto:CustomerCare.Europe@orascoptic.com)



962059 Rev. P 10/23